

# 485 HTS



The updated 485 HTS joins the amazing third-generation Galeon model lineup with its brilliant, awe-inspiring design. This sports-oriented open deck model focuses on providing high manoeuvrability and a thrilling ride while still maintaining an exceptional level of comfort.

The layout of the 485 HTS was conceived to offer a convenient and spacious living arrangement. The main deck features a U-shaped sofa, a wet bar and

a helm station with double seats. The cockpit area is occupied by a settee and sundeck and can be divided by retractable glass door to help keep the elements at bay. Select a smaller garage option to take advantage of the larger U-shaped sofa for guests. Wide side decks on both sides lead to the bow where an additional leisure area awaits.

Down below an abundance of natural light penetrates the interior, with a large glass ceiling over the helm station and ample bow skylights. Comfort and convenience have not been neglected: the master cabin located midship boasts an en suite bathroom for added privacy. The guest cabin holds the bow and has direct access to the common areas: a galley, a lounge and an additional bathroom.

Take advantage of the large hydraulic garage and platform to handle all personal water paraphernalia including dinghies and jet skis. Passengers will surely enjoy the bow leisure area with a protective bimini as well as the large sundeck in the cockpit shaded by the automatic marquee system. A wide range of engines with IPS or sterndrive propulsion systems is available along with a comprehensive list of additional equipment and several interior design lines.

The 485 is the embodiment of a modern sport cruiser with its impressive exterior, sport-like handling and the luxurious interior available in several variants. Step on board to discover what makes this model so special.





485 HTS - Custom blue hull

To make your 485 stand out even more, select one of many custom color schemes



A sporty disposition of the 485 HTS —



Perfect proportions compliment the sleek design —



## 485 HTS - Extended cockpit settee

To sit more guests, order the 485 with the extended settee instead of the sundeck area



Tight handling and great performance —



Make use of the available bath platform —



## 485 HTS - Walnut

Down below find a saloon with a galley and two guest cabins







## 485 HTS - Walnut

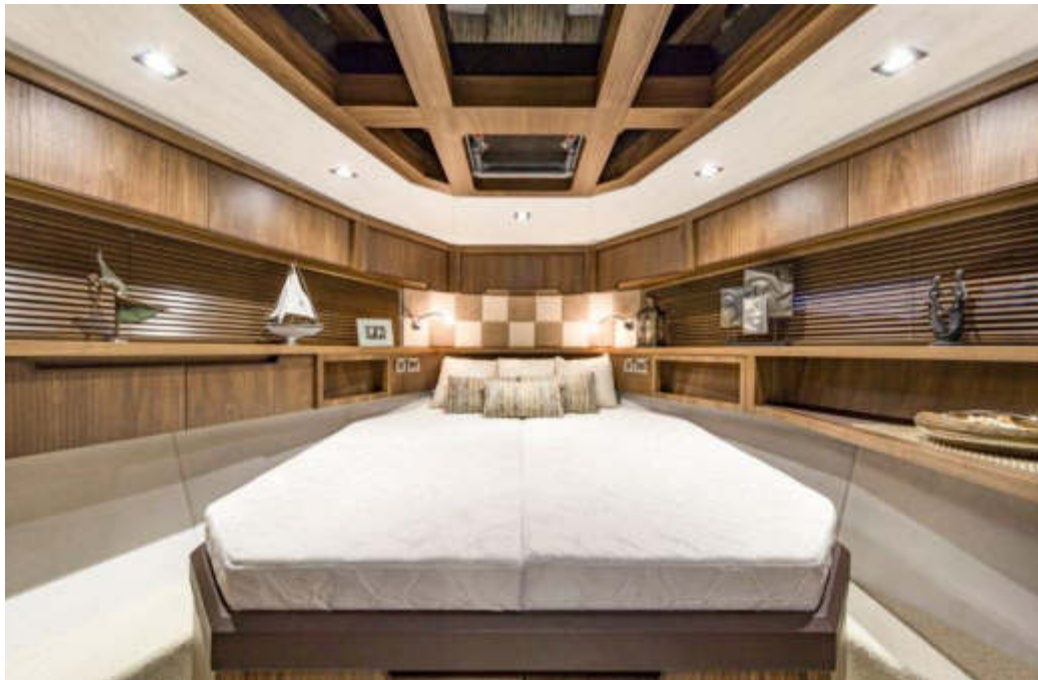
The owner's cabin is located midship for extra comfort and head space



A dinette with a fold-out table —



The compact galley will store all the necessities —



Forward VIP guest cabin with skylights above —



One of the two bathrooms below deck —



— Bow sundeck area



— Outside rest area



— Slide the sunroof and enjoy the breeze



— Open the glass door and drop the window for an open cockpit experience

# 485 HTS

# DYNAMIC COMFORT

## LAYOUTS



## TECHNICAL SPECIFICATION

Length of the hull	[m]	13.28
Length overall	[m]	14.98
Beam of the hull	[m]	4.18
Beam overall	[m]	4.25
Draft max <sub>1</sub>	[m]	0.82
Bridge clearance <sub>2</sub>	[m]	5.10
Height to transport	[m]	5.20
Fuel tank capacity	[dm <sup>3</sup> ]	2 x 600
Water tank capacity	[dm <sup>3</sup> ]	450
Grey water tank	[dm <sup>3</sup> ]	230
Black water tank	[dm <sup>3</sup> ]	120
Mass of Light Craft Condition <sub>3</sub>	[kg]	13600
Maximum Load	[kg]	3150
Min. engine (-s) power	[kW/hp]	2 x 221 / 300
Max. engine (-s) power	[kW/hp]	2 x 324 / 440
Crew limit		12
Category		B

<sub>1</sub> - without propellers    <sub>2</sub> - Max. height from water line at draft min.    <sub>3</sub> - minimum mass with base engines

3<sup>RD</sup> GALEON  
GENERATION

TONY CASTRO  
DESIGN & ARCHITECTURE

VOLVO  
PENTA

Zagle  
JACHT  
ROKU  
2011  
W POLSCE

Cabin Yacht  
Member of the Blue Boat  
series

SEAKEEPER 5



485 HTS





---

**DYNAMIC  
COMFORT**

